



# HF-Performer II for PL-T/C/R/L/TL5C lamps

## HF-P 2 22-42 PL-T/C/L/TL5C EII 220-240V

HF-Performer EII PL-T/C/R/T5c is a sustainable, slim and high-frequency electronic ballast for a wide range of CFL- ni applications. It is ideal for applications where high energy efficiency is required. The HF-Performer EII range has a robust design, meets all relevant international safety and performance standards and is energy-efficient (CELMA EEI A2). The ballast is primarily designed for Indoor application. For outdoor application, the luminaire should be minimum Classland need to be sufficiently protected against water & dust. The installation should also be guard against any lightening surge or any other necessary electrical protection as deemed in such typical installation & application.

### Product data

Operating and Electrical	
Input Voltage	220 to 240 V
Line Frequency	50 to 60 Hz
Input Frequency	50 to 60 Hz
Inrush Current Width	0.35 ms
Inrush Current Peak (Max)	31 A
Number of Products on MCB (16A Type B) (Nom)	12
Wiring	
Connector Type Input Terminals	Insert
Connector Type Output Terminals	Insert

Temperature	
Ambient temperature range	-25 °C to 50 °C
T-Case Lifetime (Nom)	75 °C
T-Case Maximum (Max)	75 °C
Approval and Application	
Ingress protection code	IP20 [Finger-protected]
Energy Efficiency Index	A2
Safety Standard	IEC 61347-2-3
Environmental Standard	ISO 14001
Approval Marks	CE marking ENEC certificate VDE-EMV certificate

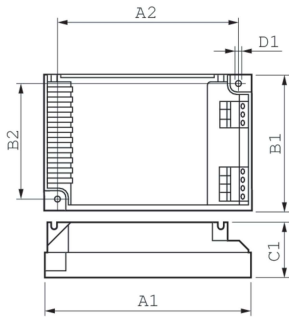
## HF-Performer II for PL-T/C/R/L/TL5C lamps

### Product Data

Order product name	HF-P 2 22-42 PL-T/C/L/TL5C EII 220-240V
Full product name	HF-P 2 22-42 PL-T/C/L/TL5C EII 220-240V
Full product code	871150091399930
Order code	913700630866
Material Nr. (12NC)	913700630866

Numerator - Quantity Per Pack	1
Net Weight (Piece)	0.150 kg
EAN/UPC - Product/Case	8711500913999
Numerator - Packs per outer box	12
EAN/UPC - Case	8711500914019

### Dimensional drawing



Product	D1	C1	A1	A2	B1	B2
HF-P 2 22-42 PL-T/C/L/ TL5C EII 220-240V	4.5 mm	30.0 mm	103.0 mm	93.5 mm	67.0 mm	57.5 mm

