



# LED Power Drivers

## LED Power Driver 20W 24V

Xitanium Constant Voltage LED drivers are the perfect choice for enabling easy modular parallel connection of Philips LED products (like LDM and InteGrade families) used in refrigerated cabinets and display lighting. The drivers have an operating life matching that of LEDs. They offer excellent reliability and ensure a simplified installation process. Robust design reduces maintenance and lowers the cost of ownership over the application lifetime.

### Product data

General Information	
Lighting Technology	LED
Operating and Electrical	
Line Frequency	50 to 60 Hz
Input Frequency	50 to 60 Hz
Total Harmonic Distortion IEC (Max)	20 %
Power Consumption	25 W
Maximum Efficiency at Full Load	80 %
Output Current (Max)	0.85 mA
Output Current (Nom)	850 mA
Output Voltage Tolerance (Max)	5 %
Open Circuit Voltage (DC) (Max)	25.6 V
Input Current (Max)	- mA
Inrush Current Peak (Max)	60 A
Output Power (Max)	20 W
Output Power (Min)	2 W
Output Current (Min)	0 mA
Output Voltage (Max)	25.6 V
Output Voltage (Min)	23.5 V

Wiring	
Output Wire Length	300 mm
Input Wire Cross Section (Nom)	0.82 mm <sup>2</sup>
System characteristics	
Central DC Operation	No
YellowDot ready	No
Temperature	
Ambient temperature range	-30 °C to 60 °C
T-Case Lifetime (Max)	75 °C
T-Case Lifetime (Nom)	70 °C
T-Case Maximum (Max)	85 °C
Controls and Dimming	
Control Interface	None
Dimmable	No
Mechanical and Housing	
Housing Color	White
Product Length	150 mm

## LED Power Drivers

Overall length	150 mm
Overall width	37 mm
Overall height	25 mm
Dimensions (Height x Width x Depth)	25 x 37 x 150 mm

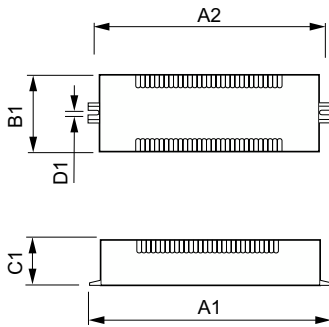
### Approval and Application

Ingress protection code	IP20 [Finger-protected]
Isolation Classification	Class I and Class II
Approval Marks	CB Certificate CCC certificate CE marking SELV VDE certificate cUL certificate
Output Current Set Options	-
Protection class IEC	Safety class I/II

### Product Data

Order product name	LED Power Driver 20W 24V
Full product name	LED Power Driver 20W 24V
Full product code	871829121524000
Order code	929000654006
Material Nr. (12NC)	929000654006
Numerator - Quantity Per Pack	1
Net Weight (Piece)	0.220 kg
EAN/UPC - Product/Case	8718291215240
Numerator - Packs per outer box	10
EAN/UPC - Case	8718291215257

### Dimensional drawing



Product	D1	A2	C1	A1	B1
LED Power Driver 20W 24V	4.4 mm	140 mm	27.0 mm	150.0 mm	37 mm

