



CorePro LED PLS



CorePro LED PLS 5W 830 2P G23

The Philips CorePro LED PLS integrates a LED light source into a traditional fluorescent form factor. This product is the ideal solution for uplamplng in general lighting applications: it meets basic lighting requirements, offers significant energy savings, and is environment-friendly.

Product data

General Information	
Cap-Base	G23
Nominal lifetime	30,000 hour(s)
Switching Cycle	50,000
Lighting Technology	LED
Flux measurement reference	Sphere
Light Technical	
Color Code	830 [CCT of 3000K]
Beam Angle (Nom)	120 degree(s)
Luminous Flux	520 lm
Luminous Efficacy (rated) (Nom)	104.00 lm/W
Color Designation	White (WH)
Correlated Color Temperature (Nom)	3000 K
Color Consistency	<6
Color rendering index (CRI)	82
LLMF At End Of Nominal Lifetime (Nom)	70 %
Photobiological safety according to EN 62471	RG0
Operating and Electrical	
Line Frequency	50 to 60 Hz
Input Frequency	50 to 60 Hz
Power Consumption	5 W

Starting Time (Nom)	0.5 s
Warm-up time to 60% light	0.5 s
Power Factor (Fraction)	0.9
Voltage (Nom)	220-240 V
LED alternative to fluorescent lamp power	11 W
Inrush current at mains	3
Max. lamp no. on MCB B type 10A - Mains	159
Max. lamp no. on MCB B type 10A – EM ballast without Compensation Capacitor.	220
Max. lamp no. on MCB B type 10A – EM ballast with Compensation Capacitor.	30
Max. lamp no. on MCB B type 16A - Mains	306
Max. lamp no. on MCB B type 16A – EM ballast without Compensation Capacitor.	330
Max. lamp no. on MCB B type 16A – EM ballast with Compensation Capacitor.	49
Ballast Compatibility	EM
Temperature	
Ambient temperature range	-20 °C to 45 °C
T-Case Maximum (Nom)	83 °C

CorePro LED PLS

Controls and Dimming

Dimmable	No
----------	----

Mechanical and Housing

Bulb Material	Plastic
Product Length	170 mm
Bulb Shape	PL-S

Approval and Application

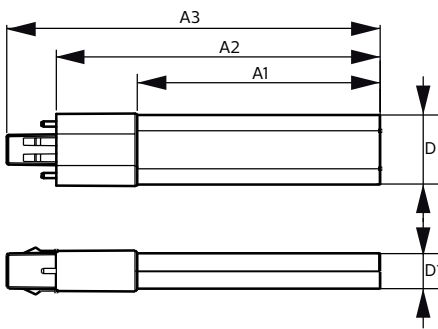
Energy Efficiency Class	F
Energy Saving Product	Yes
Approval Marks	TUV CE marking RoHS compliance KEMA Keur certificate
Energy Consumption kWh/1000 h	5 kWh
EPREL Registration Number	403566
CE mark	Yes

EU RoHS compliant	Yes
-------------------	-----

Product Data

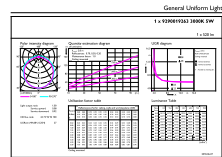
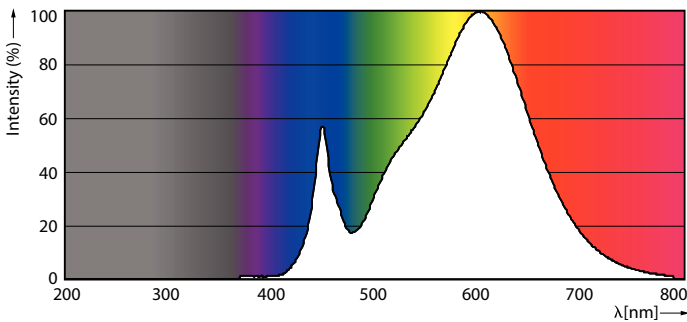
Order product name	CorePro LED PLS 5W 830 2P G23
Full product name	CorePro LED PLS 5W 830 2P G23
Full product code	871869959666800
Order code	929001926302
Material Nr. (12NC)	929001926302
Numerator - Quantity Per Pack	1
Net Weight (Piece)	0.043 kg
EAN/UPC - Product/Case	8718699596668
Numerator - Packs per outer box	20
EAN/UPC - Case	8718699596675

Dimensional drawing



Product	D	D1	A1	A2	A3
CorePro LED PLS 5W 830 2P G23	31.1 mm	15.8 mm	108 mm	144 mm	166 mm

Photometric data

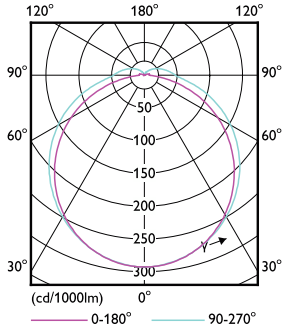


Spectral Power Distribution Colour - CorePro LED PLS 5W 830 2P G23

General uniform lighting - CorePro LED PLS 5W 830 2P G23

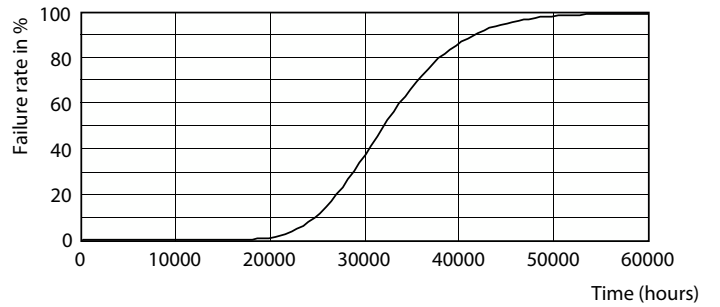
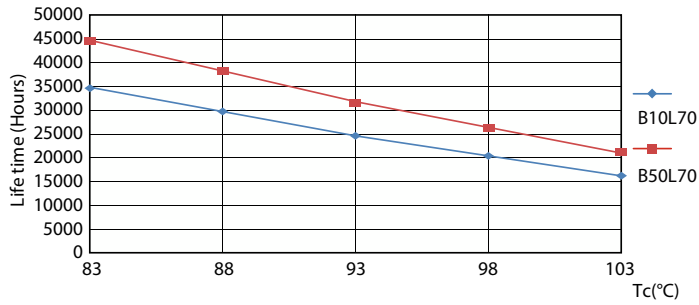
CorePro LED PLS

Photometric data



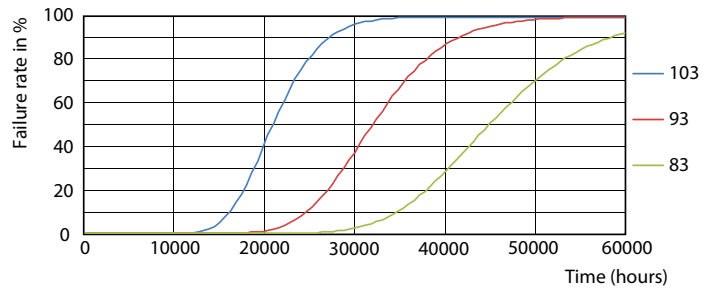
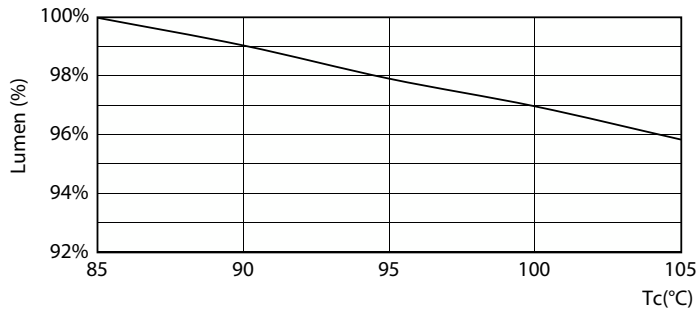
Light Distribution Diagram - CorePro LED PLS 5W 830 2P G23

Lifetime



LEDtube CorePro PLS EM 5W G23 830 12D ND

LEDtube CorePro PLS EM 5W G23 830 12D ND

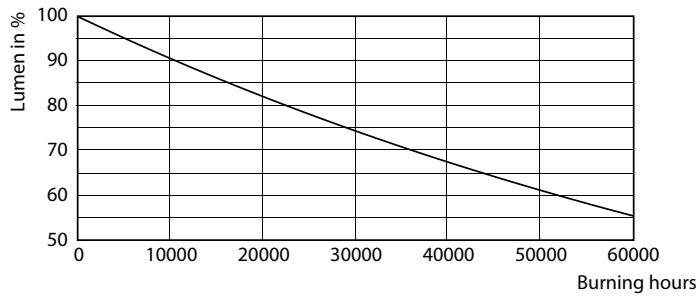


Lumen Maintenance Diagram - CorePro LED PLS 5W 830 2P G23

LEDtube CorePro PLS EM 5W G23 830 12D ND

CorePro LED PLS

Lifetime



Lumen Maintenance Diagram - CorePro LED PLS 5W 830 2P G23

