



CorePro LED PLS



CorePro LED PLS 5W 840 2P G23

The Philips CorePro LED PLS integrates a LED light source into a traditional fluorescent form factor. This product is the ideal solution for uplamplung in general lighting applications: it meets basic lighting requirements, offers significant energy savings, and is environment-friendly.

Product data

General Information	
Cap-Base	G23
Nominal lifetime	30,000 hour(s)
Switching Cycle	50,000
Lighting Technology	LED
Flux measurement reference	Sphere
Light Technical	
Color Code	840 [CCT of 4000K]
Beam Angle (Nom)	120 degree(s)
Luminous Flux	550 lm
Luminous Efficacy (rated) (Nom)	110 lm/W
Color Designation	Cool White (CW)
Correlated Color Temperature (Nom)	4000 K
Color Consistency	<6
Color rendering index (CRI)	82
LLMF At End Of Nominal Lifetime (Nom)	70 %
Flickering value (PstLM) - Flickering value as per EN 61000-3-3	1
Stroboscopic effect visibility measure (SVM)	0.4
Photobiological safety according to EN 62471	RG0

Operating and Electrical	
Input Frequency	50 to 60 Hz
Power Consumption	5 W
Lamp Current (Nom)	31 mA
Starting Time (Nom)	0.5 s
Warm-up time to 60% light	0.5 s
Power Factor (Fraction)	0.9
Voltage (Nom)	220-240 V
LED alternative to fluorescent lamp power	9/11 W
Inrush current at mains	6.6
Max. lamp no. on MCB B type 10A - Mains	116
Max. lamp no. on MCB B type 10A – EM ballast without Compensation Capacitor.	355
Max. lamp no. on MCB B type 10A – EM ballast with Compensation Capacitor.	-
Max. lamp no. on MCB B type 16A - Mains	186
Max. lamp no. on MCB B type 16A – EM ballast without Compensation Capacitor.	569
Max. lamp no. on MCB B type 16A – EM ballast with Compensation Capacitor.	-
Ballast Compatibility	EM/Mains

CorePro LED PLS

Temperature

Ambient temperature range	-20 to +45 °C
T-Case Maximum (Nom)	50 °C

Controls and Dimming

Dimmable	No
----------	----

Mechanical and Housing

Bulb Finish	Frosted
Bulb Material	Plastic
Product Length	0 mm
Bulb Shape	PL-S

Approval and Application

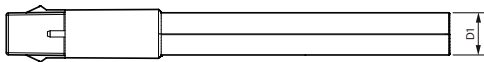
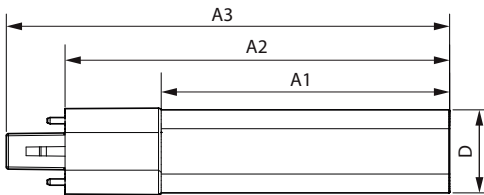
Energy Efficiency Class	E
Energy Saving Product	Yes
Approval Marks	RoHS compliance CE marking KEMA Keur certificate

Energy Consumption kWh/1000 h	5 kWh
EPREL Registration Number	1820623
CE mark	Yes
EU RoHS compliant	Yes

Product Data

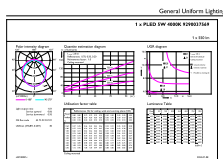
Order product name	CorePro LED PLS 5W 840 2P G23
Full product name	CorePro LED PLS 5W 840 2P G23
Full product code	872016928660300
Order code	929003756902
Material Nr. (12NC)	929003756902
Numerator - Quantity Per Pack	1
Net Weight (Piece)	0.043 kg
EAN/UPC - Product/Case	8720169286603
Numerator - Packs per outer box	20
EAN/UPC - Case	8720169286610

Dimensional drawing



Product	D1	D2	A1	A2	A3
CorePro LED PLS 5W 840 2P G23	34 mm		108 mm	144 mm	166 mm

Photometric data

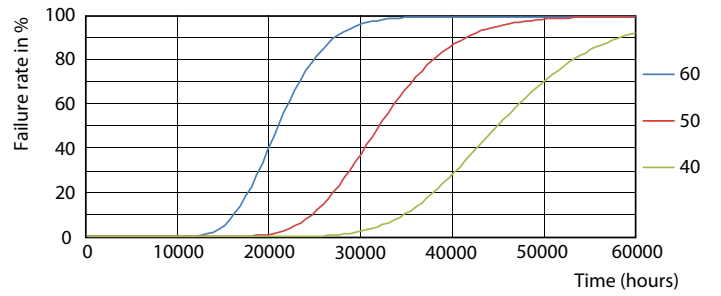
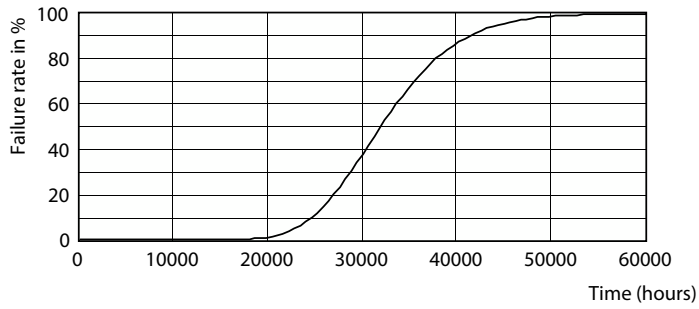


Product Information 11 Page Lighting 01 Page 11

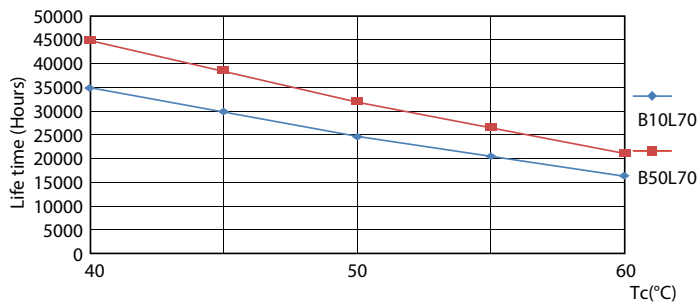
General uniform lighting - CorePro LED PLS 5W 840 2P G23

CorePro LED PLS

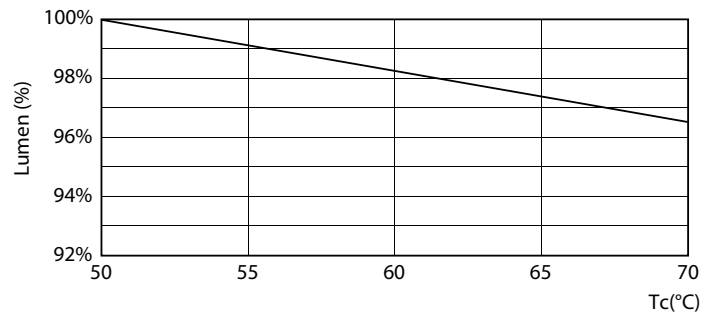
Lifetime



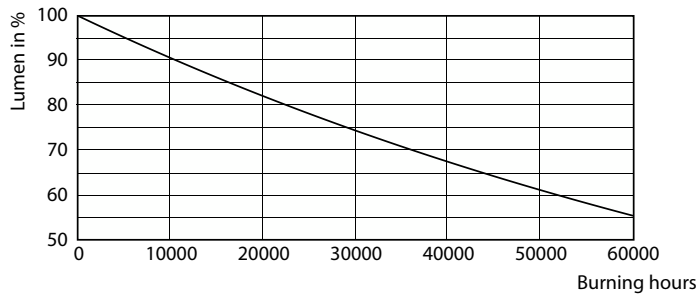
Life Expectancy Diagram



FailureRate



LifetimeVsTc



Lumen Maintenance Diagram - CorePro LED PLS 5W 840 2P G23

Lumen Maintenance Diagram - CorePro LED PLS 5W 840 2P G23

CorePro LED PLS

