



CorePro LED PLC 4P



CorePro LED PLC 9.5W 840 4P G24q-3

The CorePro LED PLC 4P integrates a LED light source into a traditional fluorescent form factor. This product is the ideal solution for uplamping in general lighting applications: it meets basic lighting requirements, offers significant energy savings, and is environmentally friendly.

Product data

General Information		Warm-up time to 60% light	
Cap-Base	G24q-3 ROT		0.5 s
Nominal lifetime	30,000 hour(s)	Power Factor (Fraction)	0.9
Switching Cycle	200,000	Voltage (Nom)	220-240 V
Lighting Technology	LED	LED alternative to fluorescent lamp power	26 W
Flux measurement reference	Sphere	Inrush current at mains	-
		Max. lamp no. on MCB B type 10A - Mains	-
		Max. lamp no. on MCB B type 10A – EM ballast without Compensation Capacitor.	-
		Max. lamp no. on MCB B type 10A – EM ballast with Compensation Capacitor.	-
		Max. lamp no. on MCB B type 16A - Mains	-
		Max. lamp no. on MCB B type 16A – EM ballast without Compensation Capacitor.	-
		Max. lamp no. on MCB B type 16A – EM ballast with Compensation Capacitor.	-
		Ballast Compatibility	HF/Mains
Light Technical		Temperature	
Color Code	840 [CCT of 4000K]	T-Case Maximum (Nom)	75 °C
Beam Angle (Nom)	120 degree(s)		
Luminous Flux	1,100 lm	Controls and Dimming	
Color Designation	Cool White (CW)	Dimmable	No
Correlated Color Temperature (Nom)	4000 K		
Luminous Efficacy (rated) (Nom)	115 lm/W		
Color Consistency	<6		
LLMF At End Of Nominal Lifetime (Nom)	70 %		
Color rendering index (CRI)	82		
Operating and Electrical			
Input Frequency	50 to 60 Hz		
Power Consumption	9.5 W		
Lamp Current (Nom)	52 mA		
Starting Time (Nom)	0.5 s		

CorePro LED PLC 4P

Mechanical and Housing

Bulb Finish	Frosted
Bulb Material	Plastic
Product Length	200 mm
Bulb Shape	PL-C

Approval and Application

Energy Efficiency Class	E
Energy Saving Product	Yes
Approval Marks	RoHS compliance
Energy Consumption kWh/1000 h	10 kWh
EPREL Registration Number	1945440
CE mark	Yes
EU RoHS compliant	Yes
Ambient temperature range	-20 to +45 °C

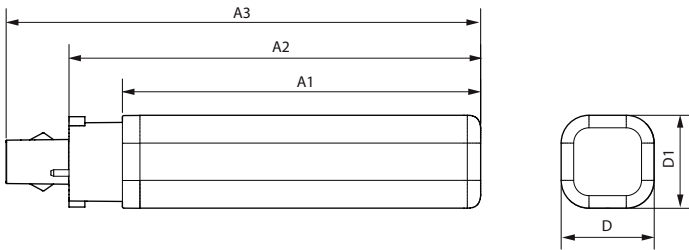
Application Conditions

can it be used in closed luminaires	Yes
-------------------------------------	-----

Product Data

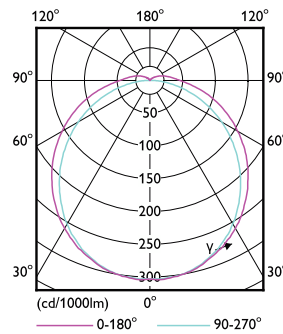
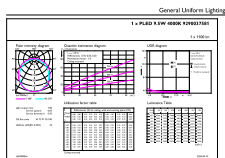
Order product name	CorePro LED PLC 9.5W 840 4P G24q-3
Full product name	CorePro LED PLC 9.5W 840 4P G24q-3
Full product code	872016929051800
Order code	929003758102
Material Nr. (12NC)	929003758102
Numerator - Quantity Per Pack	1
Net Weight (Piece)	0.108 kg
EAN/UPC - Product/Case	8720169290518
Numerator - Packs per outer box	10
EAN/UPC - Case	8720169290525

Dimensional drawing



Product	D1	D	A1	A2	A3
CorePro LED PLC 9.5W 840 4P G24q-3	34 mm	34 mm	129 mm	148 mm	164 mm

Photometric data

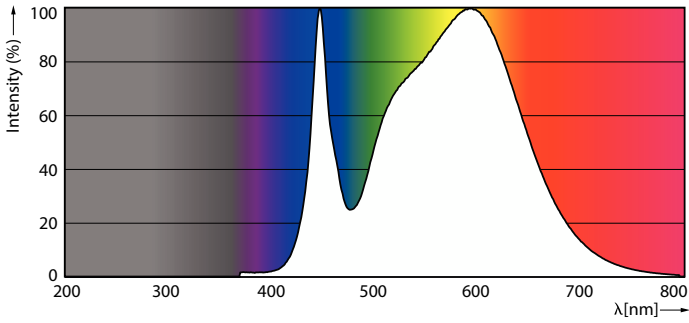


General uniform lighting - CorePro LED PLC 9.5W 840 4P G24q-3

Light Distribution Diagram - CorePro LED PLC 9.5W 840 4P G24q-3

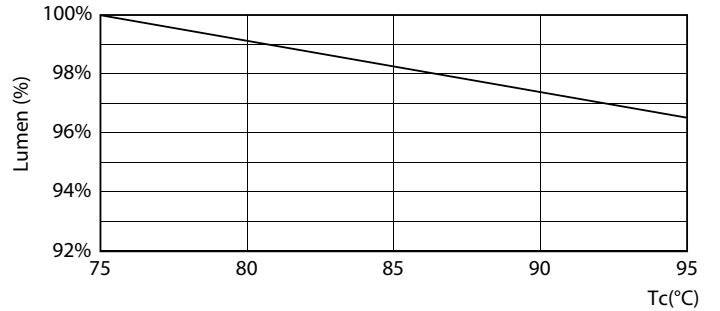
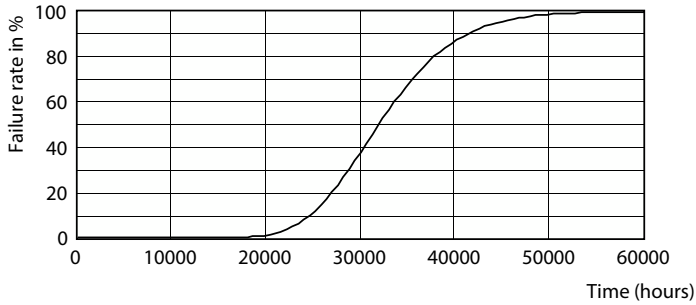
CorePro LED PLC 4P

Photometric data



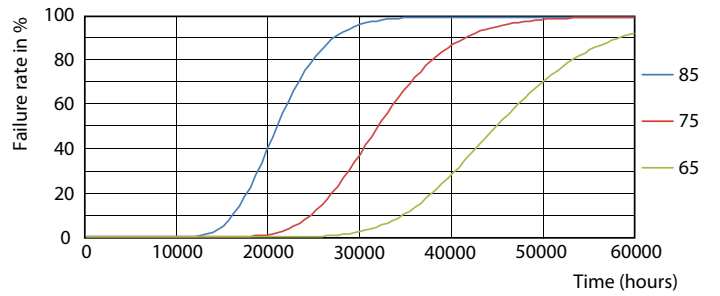
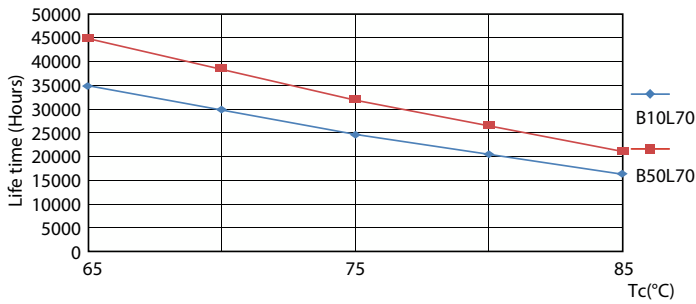
Spectral Power Distribution Colour - CorePro LED PLC 9.5W 840 4P G24q-3

Lifetime



Life Expectancy Diagram

Lumen Maintenance Diagram - CorePro LED PLC 9.5W 840 4P G24q-3

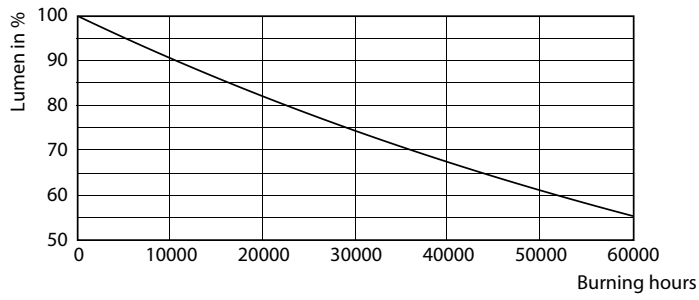


LifetimeVsTc

FailureRate

CorePro LED PLC 4P

Lifetime



Lumen Maintenance Diagram - CorePro LED PLC 9.5W 840 4P G24q-3

