



MASTER LEDtube InstantFit HF T5



MAS LEDtube HF 600mm HE 7W 830 T5

The Philips MASTER LEDtube integrates a LED light source into a traditional fluorescent form factor. Its unique design creates a perfectly uniform visual appearance, which cannot be distinguished from traditional fluorescent. These T5 lighting tubes are the right choice for absolute performance and are designed to stand up to everyday conditions. Unparalleled savings thanks to low energy consumption and an exceptionally long lifetime make these T5 LED tubes the choice for every demanding application.

Product data

General Information		Photobiological safety according to EN 62471	
Cap-Base	G5	RG0	
Nominal lifetime	60,000 hour(s)	Operating and Electrical	
Switching Cycle	50,000	Input Frequency	30K to 100K Hz
Lighting Technology	LED	Power Consumption	7 W
Flux measurement reference	Sphere	Lamp Current (Max)	350 mA
Light Technical		Lamp Current (Min)	150 mA
Color Code	830 [CCT of 3000K]	Starting Time (Nom)	0.5 s
Beam Angle (Nom)	200 degree(s)	Warm-up time to 60% light	0.5 s
Luminous Flux	1,000 lm	Power Factor (Fraction)	0.92
Luminous Efficacy (rated) (Nom)	142 lm/W	Voltage (Nom)	40-70 V
Color Designation	White (WH)	LED alternative to fluorescent lamp power	14 W
Correlated Color Temperature (Nom)	3000 K	Inrush current at mains	-
Color Consistency	<6	Max. lamp no. on MCB B type 10A - Mains	-
Color rendering index (CRI)	80	Max. lamp no. on MCB B type 10A – EM ballast without Compensation Capacitor.	-
LLMF At End Of Nominal Lifetime (Nom)	70 %	Max. lamp no. on MCB B type 10A – EM ballast with Compensation Capacitor.	-

MASTER LEDtube InstantFit HF T5

Max. lamp no. on MCB B type 16A – Mains	-
Max. lamp no. on MCB B type 16A – EM ballast without Compensation Capacitor.	-
Max. lamp no. on MCB B type 16A – EM ballast with Compensation Capacitor.	-
Ballast Compatibility	HF

Temperature

Ambient temperature range	-20 to +45 °C
T-Case Maximum (Nom)	50 °C

Controls and Dimming

Dimmable	Yes - Check ballast compatibility
----------	-----------------------------------

Mechanical and Housing

Bulb Finish	Frosted
Bulb Material	Glass
Product Length	600 mm
Bulb Shape	T5

Approval and Application

Energy Efficiency Class	E
Energy Saving Product	Yes
Approval Marks	RoHS compliance KEMA Keur certificate

Energy Consumption kWh/1000 h	7 kWh
EPREL Registration Number	1936620
CE mark	Yes
EU RoHS compliant	Yes

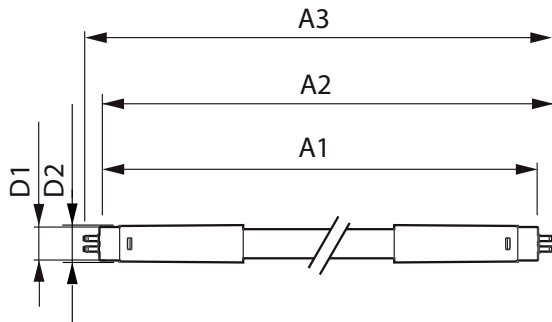
Application Conditions

can it be used in closed luminaires	Yes
-------------------------------------	-----

Product Data

Order product name	MAS LEDtube HF 600mm HE 7W 830 T5
Full product name	MAS LEDtube HF 600mm HE 7W 830 T5
Full product code	872016930966100
Order code	929003795102
Material Nr. (12NC)	929003795102
Numerator - Quantity Per Pack	1
Net Weight (Piece)	0.085 kg
EAN/UPC - Product/Case	8720169309661
Numerator - Packs per outer box	10
EAN/UPC - Case	8720169309678

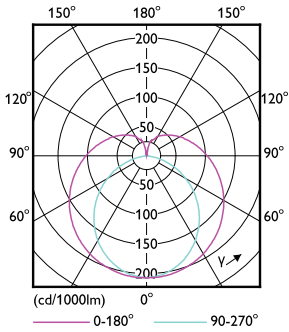
Dimensional drawing



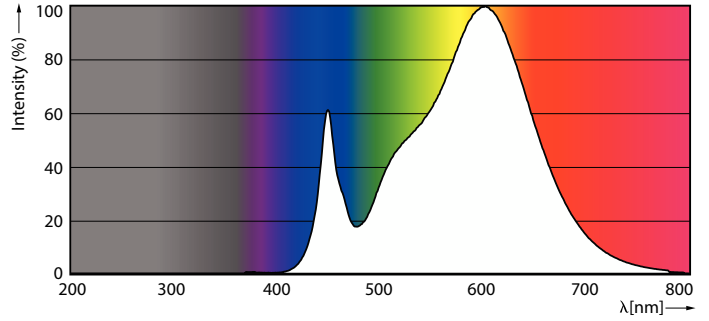
Product	D1	D2	A1	A2	A3
MAS LEDtube HF 600mm HE 7W 830 T5	15.7 mm	19 mm	549 mm	556 mm	563 mm

MASTER LEDtube InstantFit HF T5

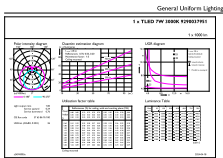
Photometric data



Light Distribution Diagram - MAS LEDtube HF 600mm HE 7W 830 T5



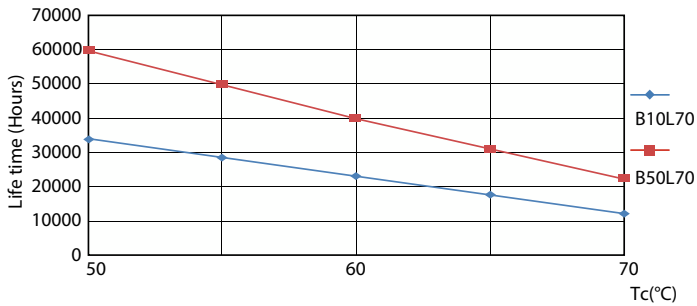
Spectral Power Distribution Colour - MAS LEDtube HF 600mm HE 7W 830 T5



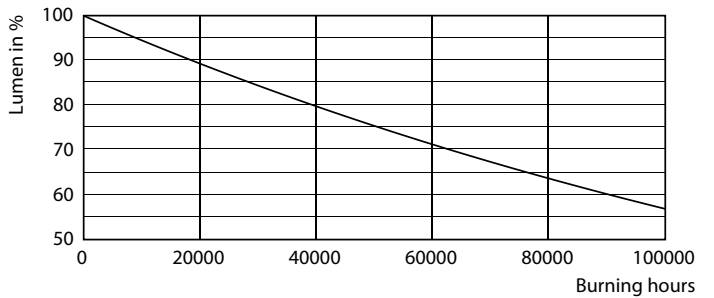
General Uniform Lighting
T5 - 7W (7W (830) (T5))
Page 17

General uniform lighting - MAS LEDtube HF 600mm HE 7W 830 T5

Lifetime



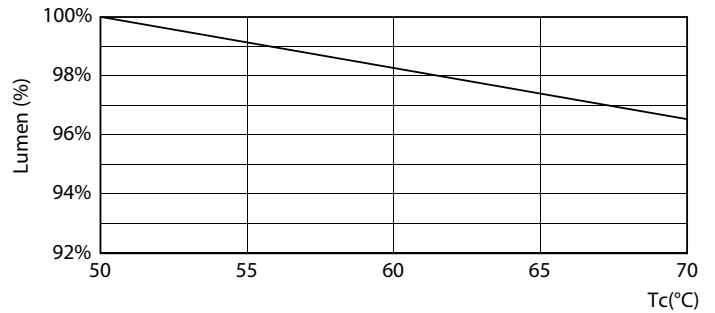
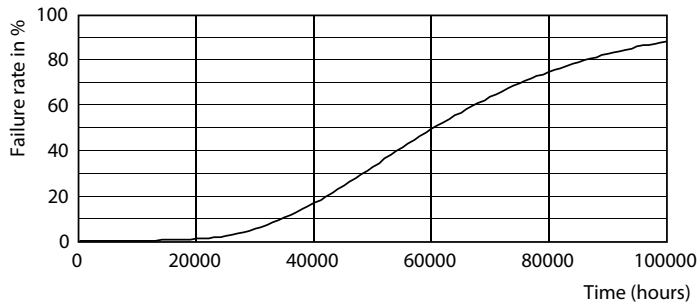
LEDtube 60K 5070 LifetimeVsTc-LED



Lumen Maintenance Diagram - MAS LEDtube HF 600mm HE 7W 830 T5

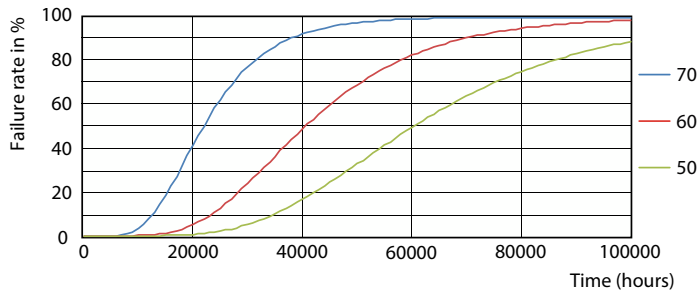
MASTER LEDtube InstantFit HF T5

Lifetime



Life Expectancy Diagram

Lumen Maintenance Diagram - MAS LEDtube HF 600mm HE 7W 830 T5



LEDtube 60K 5070 FailureRate-LED

